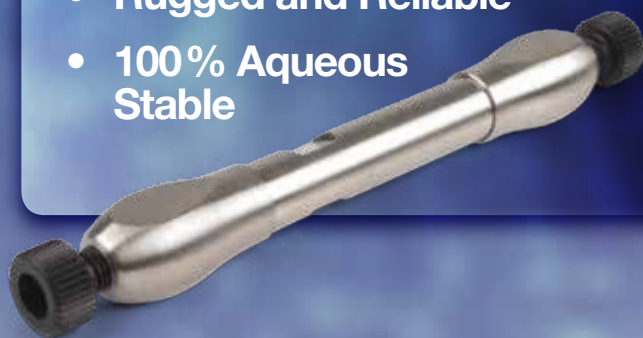


NEW Kinetex Biphenyl

Selectivity that a C18 just can't give you!

- Remarkable Separation Power
- Rugged and Reliable
- 100% Aqueous Stable

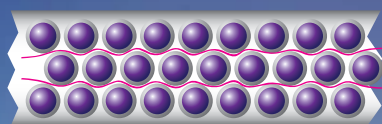


Kinetex Core-Shell Advantage

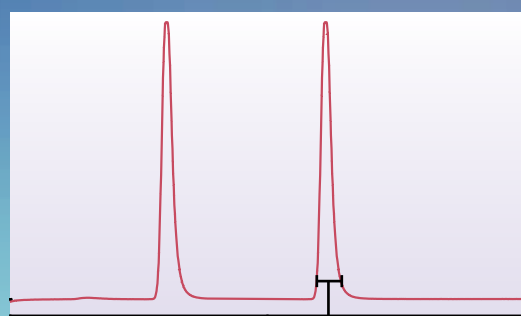
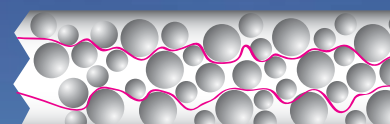
Kinetex® Core-Shell Technology produces increased efficiencies over traditional, fully porous columns on the market, yielding remarkable chromatographic resolution, higher peak capacities, and greater sensitivity, so labs can get the most out of every HPLC/UHPLC analysis.



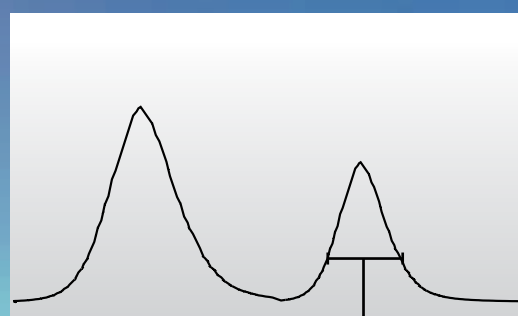
Kinetex Core-Shell



Fully Porous



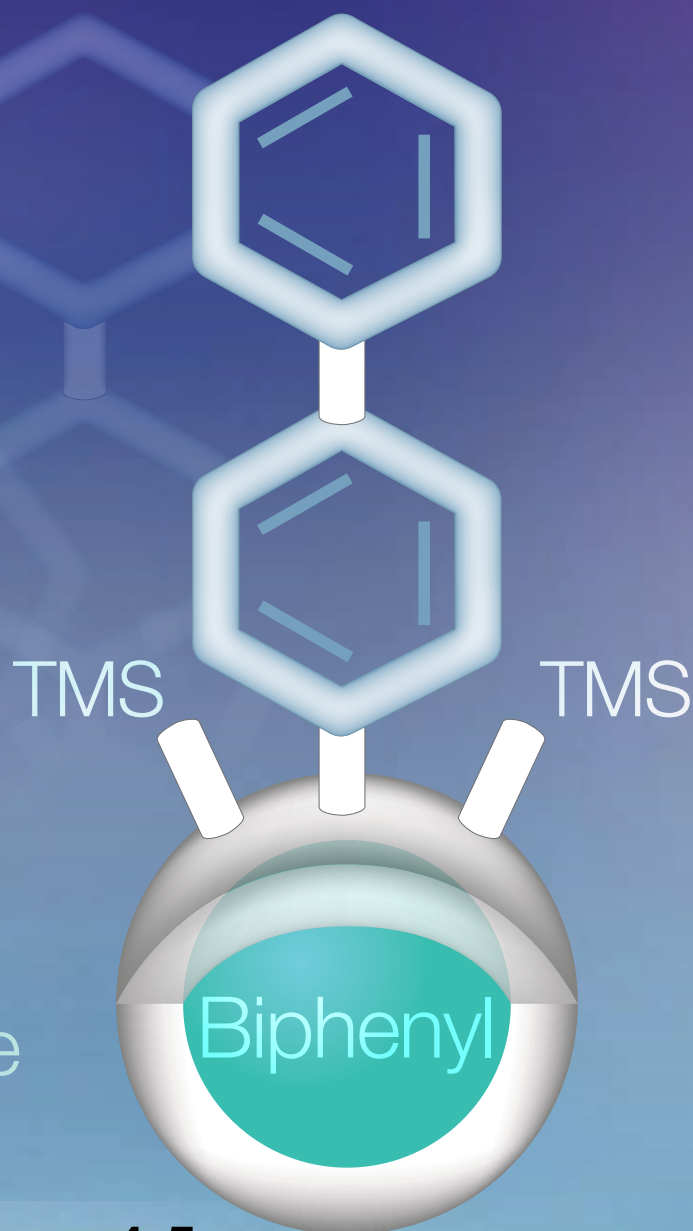
Less
Band Broadening



More
Band Broadening

guarantee

If you are not completely satisfied with Kinetex core-shell columns, send in your comparative data to a similar product within 45 days and keep the column for FREE.



Introducing the High Performance Kinetex Biphenyl!

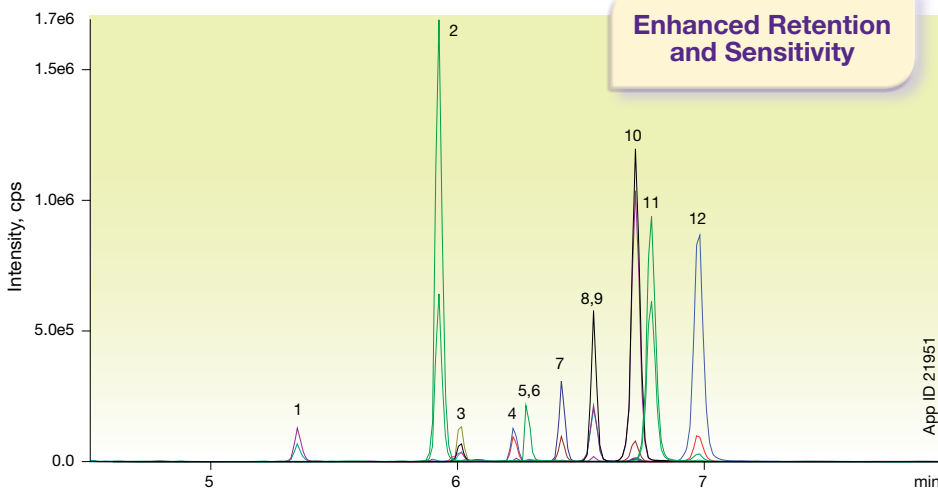
Transform your reversed phase analysis	pp. 4-5
Comprehensive pain panel testing	p. 6
Extended lifetime with biological samples	p. 7
Wide range of Kinetex selectivities	p. 8
Full scalability from HPLC to UHPLC	p. 9
Reproducibility and quality you can rely on	p. 10
Ordering information	p. 11

Transform Your Reversed Phase Analysis

Think high performance, enhanced retention, and the ability to go where a traditional C18 can't. The Kinetex® Biphenyl offers the high performance benefits of a core-shell particle with a unique stationary phase capable of becoming the go-to selectivity for reversed phase method development. Use Kinetex Biphenyl columns to get enhanced retention, higher sensitivity, and overall better results; especially for aromatic compounds.

Mycotoxins

Kinetex 2.6µm Biphenyl



Conditions for all columns:

Column: Kinetex 2.6µm Biphenyl
Waters SunFire 3.5µm C18

Dimensions: 50 x 2.1 mm

Mobile Phase: A: 5 mM Ammonium acetate with 0.1% Acetic acid

B: Methanol with 5 mM Ammonium acetate with 0.1% Acetic acid

Gradient:	Time (min)	%B
	0	2
	2	2
	5	80
	5.2	98
	8	98
	8.01	2
	11	2

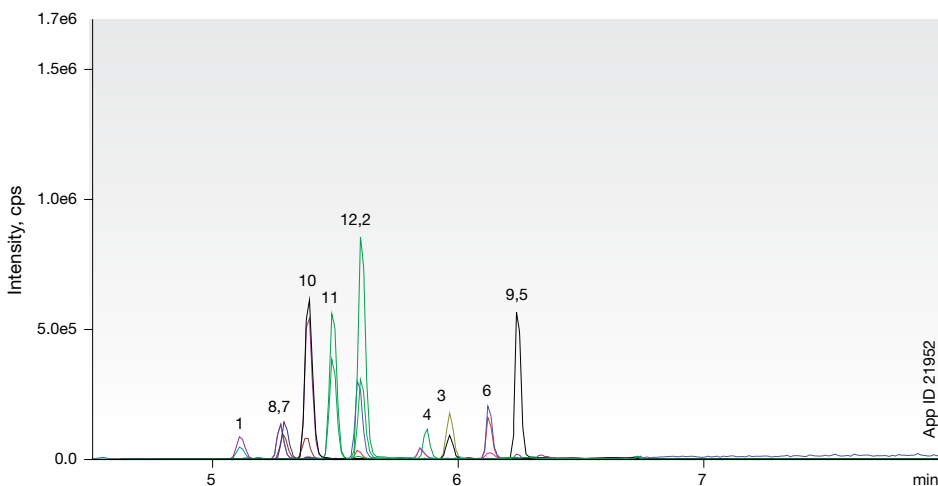
Flow Rate: 0.45 mL/min

Temperature: 40 °C

Detection: MS/MS (AB SCIEX API 4000™)

- Sample:**
- 15-Acetyldeoxynivalenol
 - DAS
 - FB1
 - HT2 Toxin
 - FB2
 - T2 Toxin
 - Aflatoxin M1
 - Aflatoxin G2
 - Ochratoxin A
 - Aflatoxin G1
 - Aflatoxin B2
 - Aflatoxin B1

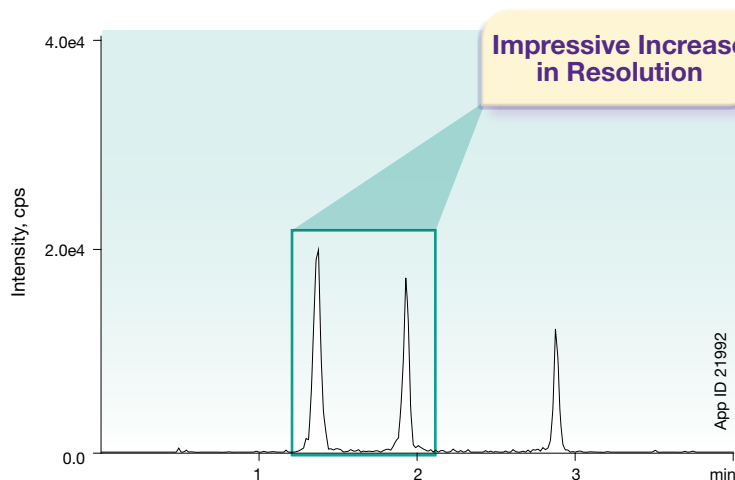
Waters® SunFire® 3.5µm C18



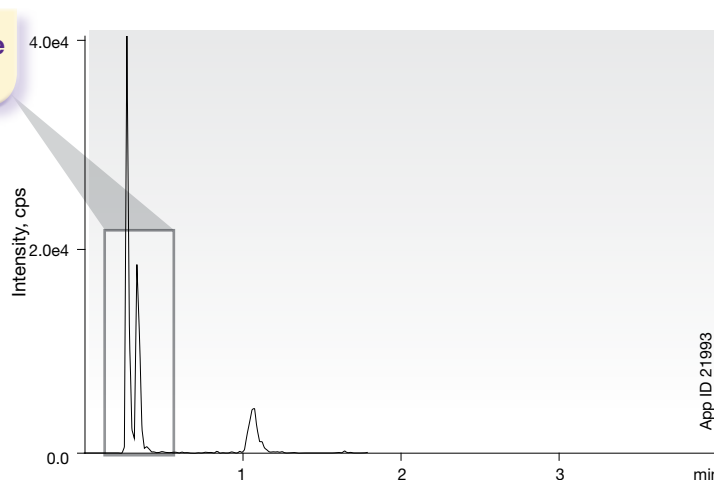
Enhanced Separation Power

Kinetex Biphenyl is a high efficiency core-shell product capable of adding extra separation power to your analysis of non-polar and polar compounds. Imagine what you could do with this new chromatography solution.

Opiate Isomers Kinetex 2.6µm Biphenyl



Fused-Core® 2.7µm C18



Conditions for all columns:

Column: Kinetex 2.6 µm Biphenyl
Fused-Core 2.7 µm C18

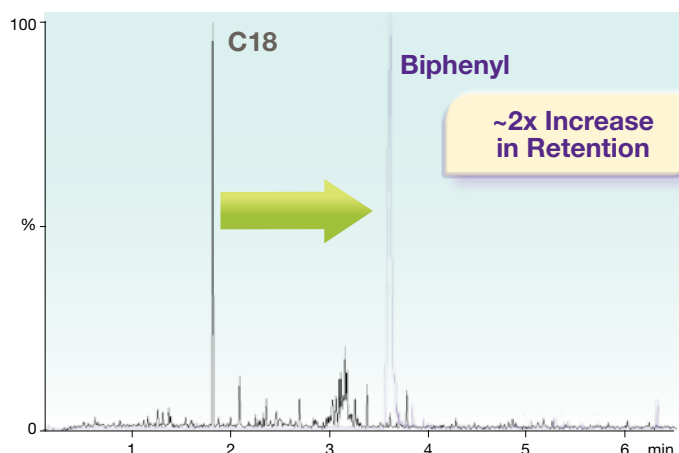
Dimensions: 50 x 2.1 mm

Mobile Phase: A: Water with 0.1 % Formic acid
B: Methanol with 0.1 % Formic acid

Gradient: Time (min)	%B
0	10
0.5	10
2	25
4.5	80
4.51	85
5.5	85
5.51	10
7	10

Flow Rate: 0.6 mL/min
Temperature: 40 °C
Detection: MS/MS (AB SCIEX API 4000™)
Sample: 1. Morphine
2. Hydromorphone
3. Norhydrocodone

Customer Example - Polar Therapeutic Drug Kinetex 5µm Biphenyl vs. Fully Porous 5µm C18



Fused-Core is a registered trademark of Advanced Materials Technology, Inc.
Phenomenex is in no way affiliated with Advanced Materials Technology, Inc. Comparative separations may not be representative of all applications.



Share your Kinetex success stories at:
www.phenomenex.com/KinetexShare

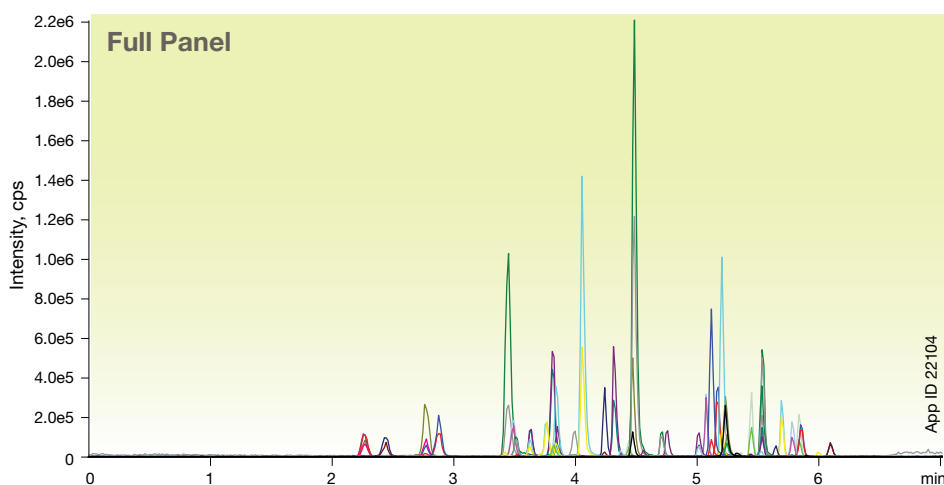
Comprehensive Pain Panel Testing

Important methods demand high performance and complete reliability. If a system or column interrupts the flow of samples, time and money can be lost. The new Kinetex® Biphenyl ensures that your comprehensive screens display the needed performance with a ruggedness and reliability that will keep you at ease.



Find more Clinical applications at:
www.phenomenex.com/ClinicalApps

Pain Panel Screen Kinetex 2.6 µm Biphenyl

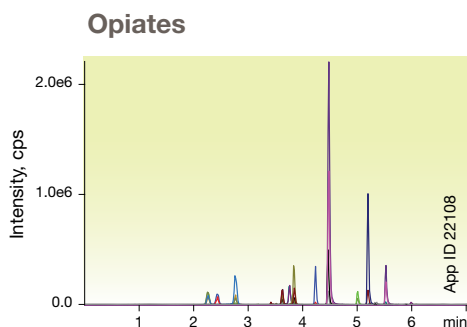


Conditions for all separations:

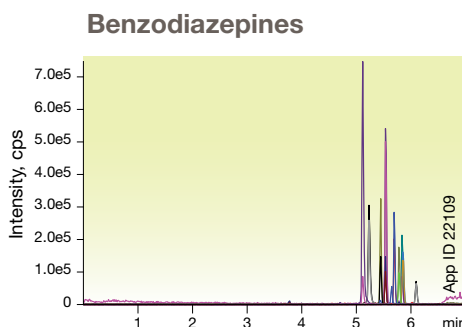
Column: Kinetex 2.6 µm Biphenyl
Dimensions: 50 x 3.0 mm
Part No.: 00B-4622-Y0
Mobile Phase: A: Water with 0.1 % Formic Acid
 B: Methanol with 0.1 % Formic Acid

Gradient:	Time (min)	%B
	0	10
	0.5	10
	2	25
	4.5	80
	4.51	85
	5.5	85
	5.51	10
	7	10

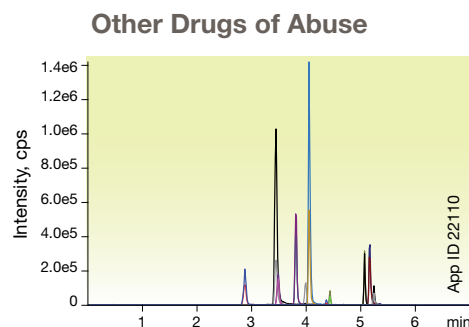
Flow Rate: 0.6 mL/min
Temperature: 40 °C
Detection: MS/MS (AB SCIEX API 5000™)



- Samples:**
1. Morphine
 2. Oxycodone
 3. Hydromorphone
 4. Naloxone
 5. Codeine
 6. 6-MAM
 7. Oxycodone
 8. Naltrexone
 9. Hydrocodone
 10. Norfentanyl
 11. Tramadol
 12. Normeperidine
 13. Meperidine
 14. Norbuprenorphine
 15. Fentanyl
 16. Buprenorphine
 17. Propoxyphene
 18. Norpropoxyphene
 19. EDDP
 20. Methadone



- Samples:**
1. Flurazepam
 2. Midazolam
 3. Lorazepam
 4. Clonazepam
 5. Oxazepam
 6. Hydroxyalprazolam
 7. Nordiazepam
 8. Flunitrazepam
 9. Temazepam
 10. Alprazolam
 11. Diazepam

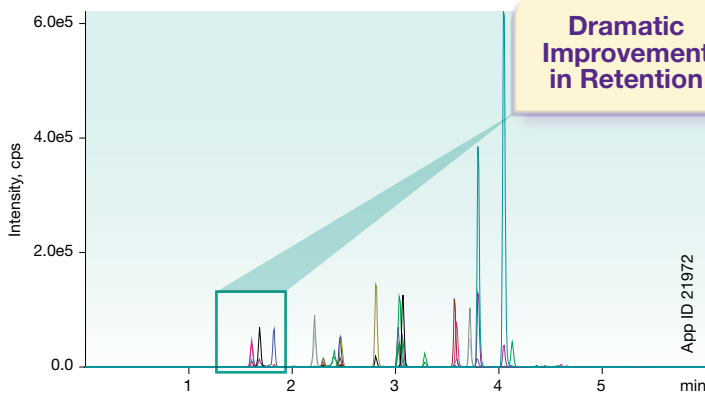


- Samples:**
1. Amphetamine
 2. Methamphetamine
 3. MDA
 4. MDMA
 5. MDEA
 6. Benzoyllecgonine
 7. Meprobamate
 8. PCP
 9. Carisoprodol
 10. Sufentanil

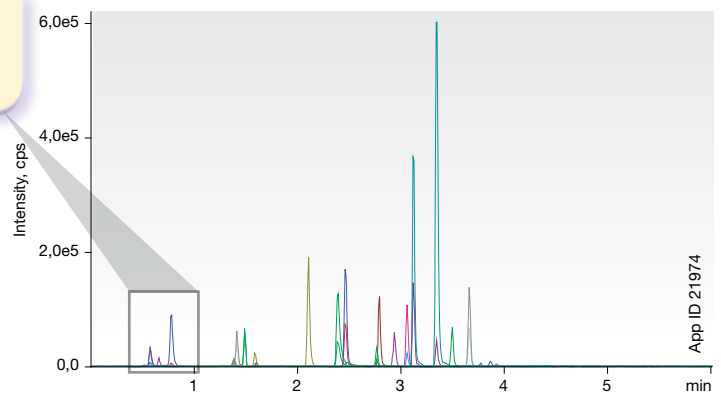
Improved Retention of Clinical Samples

Pain Panel - Opiates

Kinetex 2.6 µm Biphenyl



Fused-Core® 2.7 µm C18



Conditions for all columns:

Column: Kinetex 2.6 µm Biphenyl
Fused-Core 2.7 µm C18

Dimensions: 50 x 2.1 mm

Mobile Phase: A: Water with 0.1 % Formic acid
B: Methanol with 0.1 % Formic acid

Gradient: Time (min)	%B
0	5
4	95
4.5	95
4.51	5
6	5

Flow Rate: 0.5 mL/min

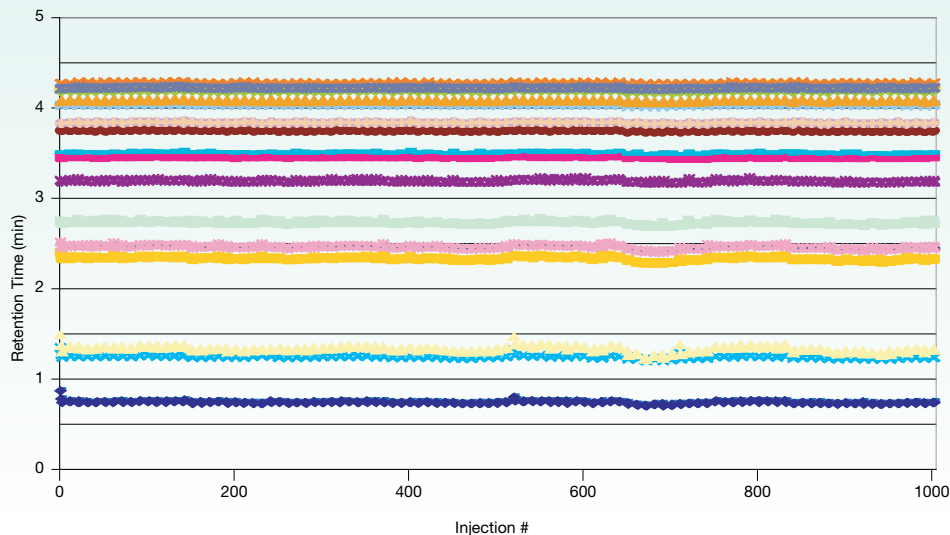
Temperature: 40 °C

Detection: MS/MS (AB SCIEX API 4000™)

- Sample:**
- | | |
|------------------|----------------------|
| 1. Morphine | 11. Normeperidine |
| 2. Oxymorphone | 12. Meperidine |
| 3. Hydromorphone | 13. Meprobamate |
| 4. Naloxone | 14. Norbuprenorphine |
| 5. Codeine | 15. Fentanyl |
| 6. Oxycodone | 16. Buprenorphine |
| 7. Naltrexone | 17. Carisoprodol |
| 8. Hydrocodone | 18. Sufentanil |
| 9. Norfentanyl | 19. Methadone |
| 10. Tramadol | |

Extended Lifetime with Biological Samples

Kinetex Biphenyl Stability in Urine (First 1000 injections)



- ◆ 7-Aminoclonazepam
- 7-Aminoflunitrazepam
- ▲ Alprazolam
- × Amphetamine
- ✱ Benzoylcegonine
- Buprenorphine
- + Clonazepam
- Codeine
- Estazolam
- ◆ Flunitrazepam
- Hydrocodone
- ▲ Hydromorphone
- × Lorazepam
- ✱ MDMA
- Methadone
- + Midazolam
- Morphine
- Norbuprenorphine
- ◆ Nordiazepam
- Norhydrocodone
- ▲ Oxazepam
- × Temazepam
- ✱ Triazolam

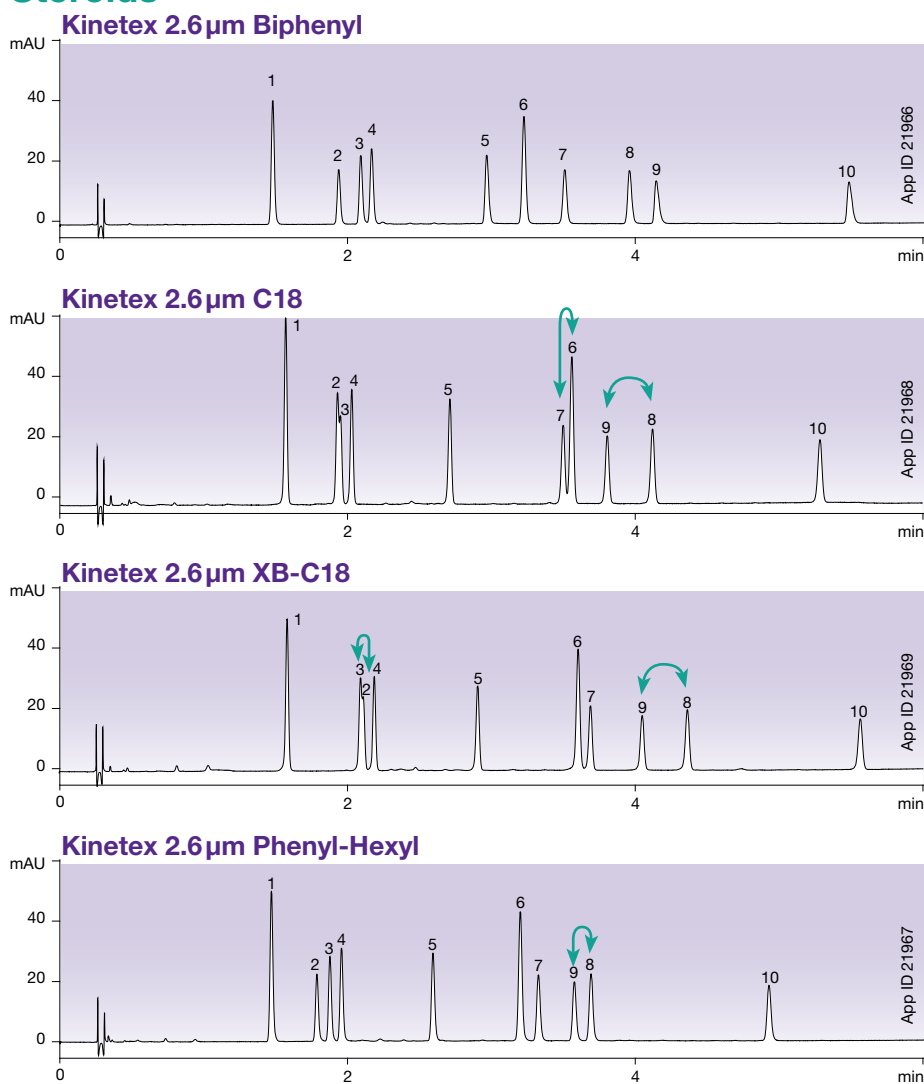
Fused-Core is a registered trademark of Advanced Materials Technology, Inc.

Phenomenex is in no way affiliated with Advanced Materials Technology, Inc. Comparative separations may not be representative of all applications.

Wide Range of Kinetex Selectivities

Choose from an extensive selection of phases for greater flexibility in UHPLC/HPLC method development. Kinetex® columns come in a variety of stationary phases to cover a full spectrum of applications ranging from acids and bases, to isomers and extremely polar compounds.

Steroids



Conditions for all columns:

- Column:** Kinetex 2.6µm Biphenyl
Kinetex 2.6µm C18
Kinetex 2.6µm XB-C18
Kinetex 2.6µm Phenyl-Hexyl
- Dimensions:** 50 x 4.6mm
- Mobile Phase:** A: Water
B: Acetonitrile
- Gradient:** 20 to 60% B in 6 minutes
- Flow Rate:** 1.85 mL/min
- Temperature:** 30 °C
- Detection:** UV @ 220 nm
- Samples:**
 1. Estriol
 2. Hydrocortisone
 3. Prednisone
 4. Cortisone
 5. Corticosterone
 6. β-Estradiol
 7. Cortisone Acetate
 8. 17-Hydroxyprogesterone
 9. 21-Hydroxyprogesterone
 10. Deoxycorticosterone

Take your pick from six stationary phases!

Phase	Selectivity
Kinetex Biphenyl	Excellent reversed phase and aromatic retention and selectivity
Kinetex C18	General hydrophobic selectivity and increased retention of polar basic compounds
Kinetex XB-C18	Excellent hydrophobic selectivity and increased retention of polar acidic compounds
Kinetex C8	Less hydrophobic than a C18 phase
Kinetex Phenyl-Hexyl	Greater retention and separation of aromatic hydrocarbons
Kinetex HILIC	Increased polar retention under HILIC conditions

Want more?
 - Applications
 - Development tips
 - Method comparisons
 Request your full Kinetex
 product guide at:
[www.phenomenex.com/
KinetexRequest](http://www.phenomenex.com/KinetexRequest)

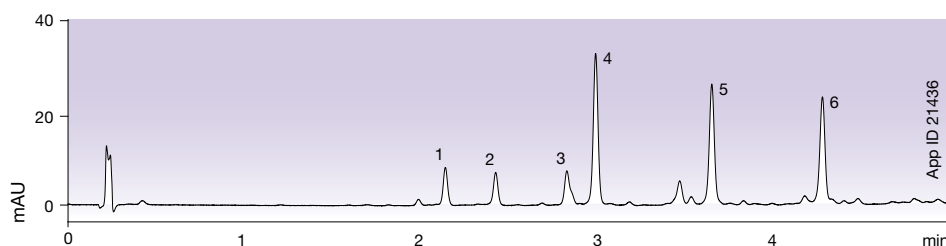
Full Scalability from HPLC to UHPLC

With four fully scalable particle sizes, Kinetex Core-Shell Technology allows you to easily develop and transfer methods to and from any LC platform you choose.



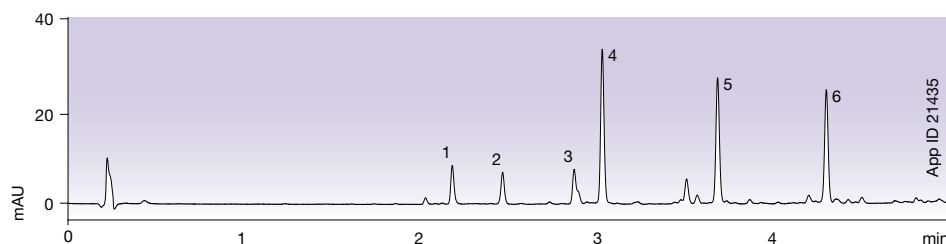
Kinetex 5µm C18

3µm or better efficiencies at 5µm pressures for HPLC and PREP LC methods



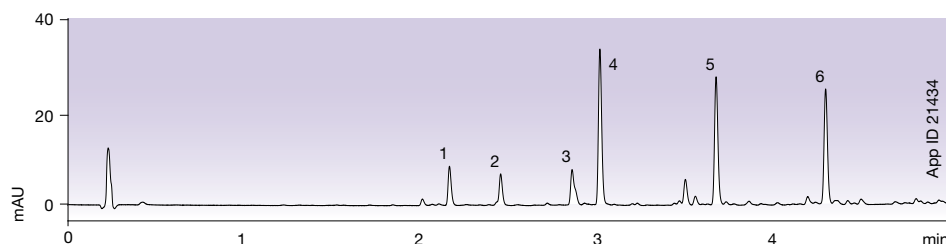
Kinetex 2.6µm C18

Achieve sub-2µm performance on HPLC and UHPLC systems



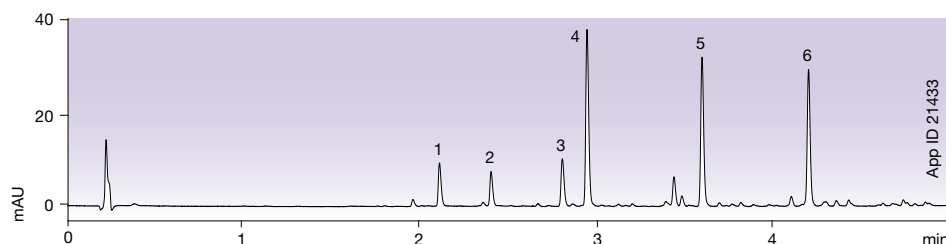
Kinetex 1.7µm C18

20% higher efficiency than fully porous 1.7µm columns



Kinetex 1.3µm C18

Incredible UHPLC efficiency and performance gains

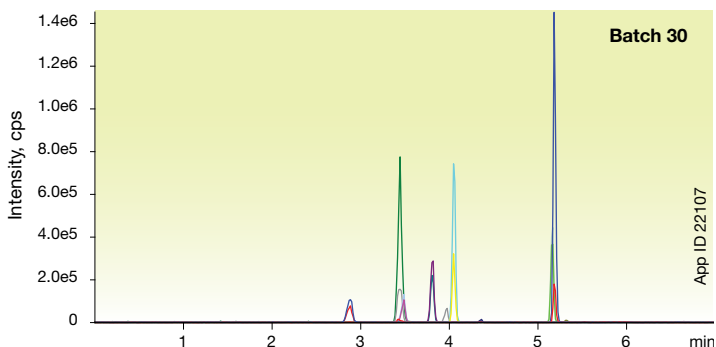
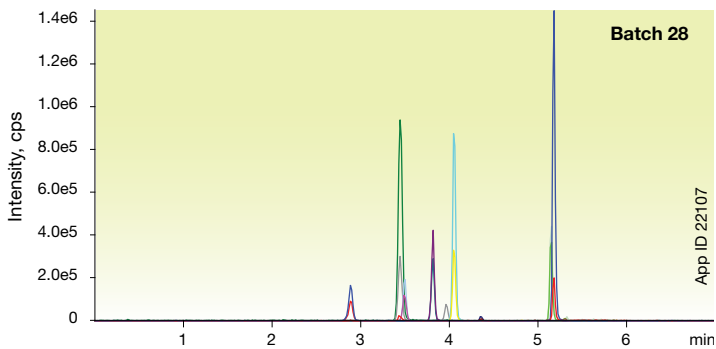
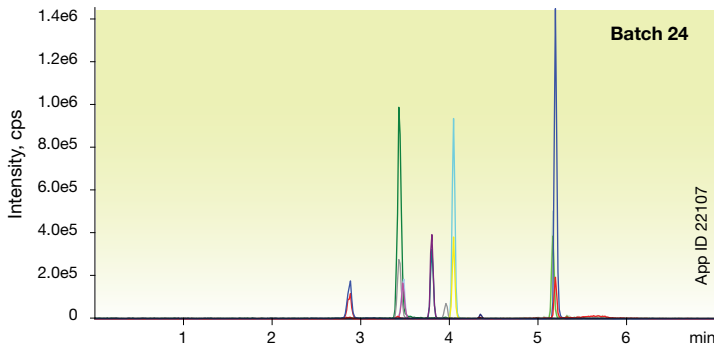


* Gingerols analyzed on 50 x 2.1 mm columns.

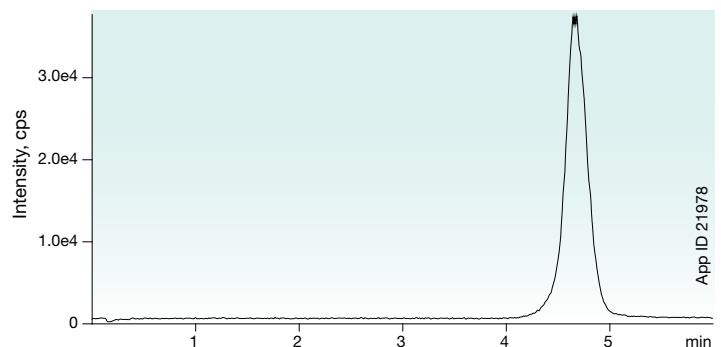
Reproducibility and Quality You Can Rely On

Your time and energy is incredibly important and should never be spent on issues with column irreproducibility. While other manufacturers skimp on quality, Phenomenex has and always will take extra steps to ensure that you get the highest quality products, each and every time. Trust us. We are overwhelmingly passionate when it comes to making sure our products live up to the standards that you demand.

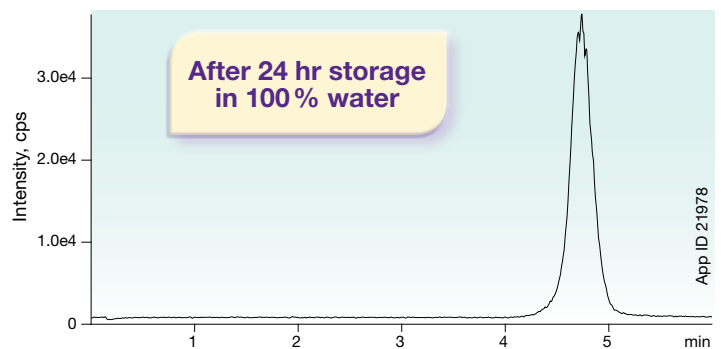
Batch-to-Batch Reproducibility Drugs of Abuse - Kinetex® 2.6µm Biphenyl



100% Aqueous Stable Amphetamine - Initial Injection



Amphetamine - Final Injection



Conditions for above separations:

- Column:** Kinetex 2.6µm Biphenyl
- Dimensions:** 50 x 2.1 mm
- Part No.:** 00B-4622-AN
- Mobile Phase:** 0.1 % Formic Acid in Water
- Flow Rate:** 0.5 mL/min
- Injection Volume:** 5 µL
- Temperature:** 40 °C
- Detection:** MS (AB SCIEX API 3000™)
- Sample:** Amphetamine (500 ng/mL)

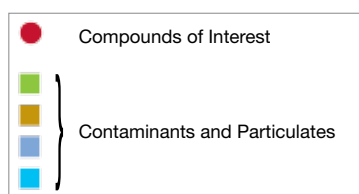
* Conditions for this test can be found on page 6.

Extend Your Column Lifetime

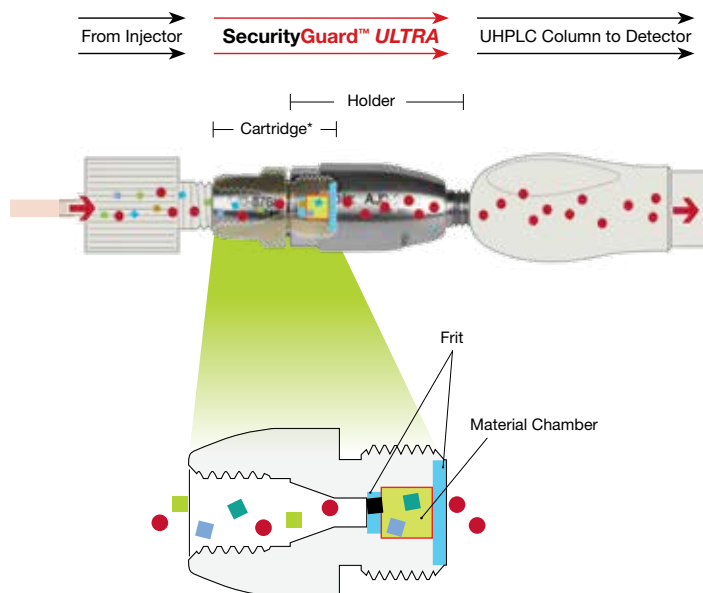


Protect your Kinetex® core-shell columns and other UHPLC columns from damaging contaminants and microparticulates with the SecurityGuard ULTRA guard cartridge system.

- Easy to use
- Extends column lifetime
- Pressure rated to 20,000 psi (1,378 bar)



*Cartridge schematic not drawn to scale



See it in action at:

www.phenomenex.com/securityguard

Kinetex core-shell columns come in a variety of phases, dimensions, and particle sizes. Visit www.phenomenex.com/kinetex for more info.



Ordering Information

Kinetex 2.6 µm Columns (mm)	SecurityGuard™ ULTRA Cartridges‡			SecurityGuard™ ULTRA Cartridges‡			SecurityGuard™ ULTRA Cartridges‡		
	50 x 2.1	100 x 2.1	3/pk	50 x 3.0	3/pk	50 x 4.6	100 x 4.6	150 x 4.6	3/pk
	\$ 655	\$ 715	\$ 399	\$ 655	\$ 399	\$ 655	\$ 715	\$ 765	\$ 399
Biphenyl	00B-4622-AN	00D-4622-AN	AJO-9209	00B-4622-YO	AJO-9208	00B-4622-E0	00D-4622-E0	00F-4622-E0	AJO-9207
	for 2.1 mm ID			for 3.0 mm ID			for 4.6 mm ID		

Kinetex 5 µm Columns (mm)	SecurityGuard™ ULTRA Cartridges‡		SecurityGuard™ ULTRA Cartridges‡		SecurityGuard™ ULTRA Cartridges‡				
	50 x 2.1	3/pk	50 x 3.0	3/pk	50 x 4.6	100 x 4.6	150 x 4.6	250 x 4.6	3/pk
	\$ 439	\$ 399	\$ 439	\$ 399	\$ 439	\$ 555	\$ 635	\$ 665	\$ 399
Biphenyl	00B-4627-AN	AJO-9209	00B-4627-YO	AJO-9208	00B-4627-E0	00D-4627-E0	00F-4627-E0	00G-4627-E0	AJO-9207
	for 2.1 mm ID		for 3.0 mm ID		for 4.6 mm ID				

‡SecurityGuard ULTRA cartridges require holder, Part No. AJO-9000.

Terms and Conditions

Subject to Phenomenex Standard Terms & Conditions, which may be viewed at www.phenomenex.com/TermsAndConditions.

Trademarks

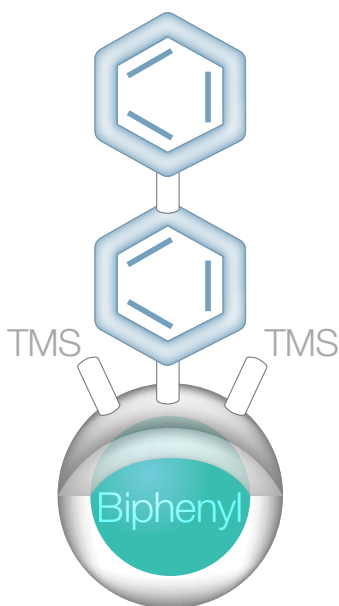
Phenomenex and Kinetex are registered trademarks, and SecurityGuard is a trademark of Phenomenex. SunFire and Waters are registered trademarks of Waters Corporation. API 3000, API 4000, and API 5000 are trademarks of AB SCIEX Pte. Ltd. Fused-Core is a registered trademark of Advanced Materials Technology, Inc.

Disclaimer

Phenomenex is not affiliated with Advanced Materials Technology, Inc. or Waters Corporation. Comparative separations may not be representative of all applications.

© 2014 Phenomenex, Inc. All rights reserved.

NEW



Kinetex® Biphenyl

Selectivity that a C18 just can't give you!

Australia

t: 02-9428-6444
f: 02-9428-6445
auinfo@phenomenex.com

Austria

t: 01-319-1301
f: 01-319-1300
anfrage@phenomenex.com

Belgium

t: 02 503 4015 (French)
t: 02 511 8666 (Dutch)
f: +31 (0)30-2383749
beinfo@phenomenex.com

Canada

t: (800) 543-3681
f: (310) 328-7768
info@phenomenex.com

Denmark

t: 4824 8048
f: +45 4810 6265
nordicinfo@phenomenex.com

Finland

t: 09 4789 0063
f: +45 4810 6265
nordicinfo@phenomenex.com

France

t: 01 30 09 21 10
f: 01 30 09 21 11
franceinfo@phenomenex.com

Germany

t: 06021-58830-0
f: 06021-58830-11
anfrage@phenomenex.com

India

t: 040-3012 2400
f: 040-3012 2411
indiainfo@phenomenex.com

Ireland

t: 01 247 5405
f: +44 1625-501796
eireinfo@phenomenex.com

Italy

t: 051 6327511
f: 051 6327555
italiainfo@phenomenex.com

Luxembourg

t: +31 (0)30-2418700
f: +31 (0)30-2383749
nlinfo@phenomenex.com

Mexico

t: 001-800-844-5226
f: 001-310-328-7768
tecnicomx@phenomenex.com

The Netherlands

t: 030-2418700
f: 030-2383749
nlinfo@phenomenex.com

New Zealand

t: 09-4780951
f: 09-4780952
nzinfo@phenomenex.com

Norway

t: 810 02 005
f: +45 4810 6265
nordicinfo@phenomenex.com

Puerto Rico

t: (800) 541-HPLC
f: (310) 328-7768
info@phenomenex.com

Sweden

t: 08 611 6950
f: +45 4810 6265
nordicinfo@phenomenex.com

United Kingdom

t: 01625-501367
f: 01625-501796
ukinfo@phenomenex.com

United States

t: (310) 212-0555
f: (310) 328-7768
info@phenomenex.com

All other countries: Corporate Office USA

t: (310) 212-0555
f: (310) 328-7768
info@phenomenex.com

 **phenomenex**[®]
...breaking with traditionSM

www.phenomenex.com

Phenomenex products are available worldwide. For the distributor in your country, contact Phenomenex USA, International Department at international@phenomenex.com